



Austin Rifle Club

SHOOTIN' STRAIGHT SINCE 1894

Affiliated with the National Rifle Association and the Texas State Rifle Association

July-August 2008

Range construction closes ranges "B", "C" and "F"

Project to replace dirt berms with cinderblock wall under way

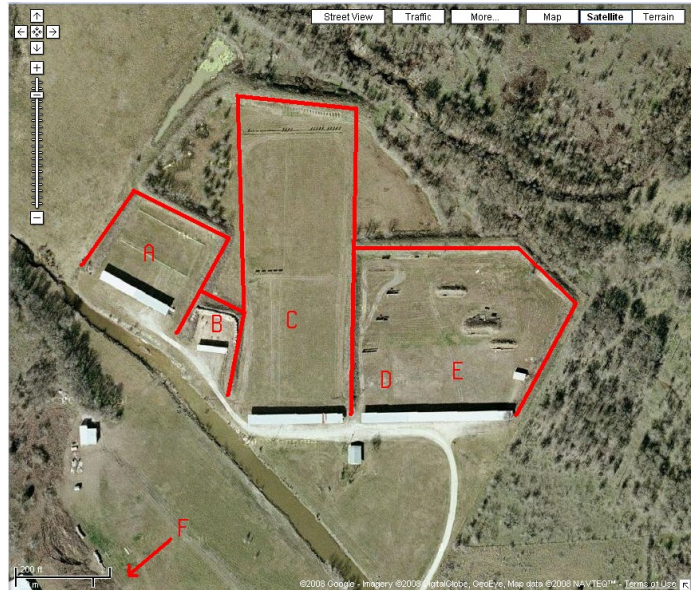
BY KEN KORNBLUM

ARC MEMBERSHIP DIRECTOR

The range construction project is back ON!

Beginning Thursday, August 14, through Sunday, August 17, the berm separating Ranges "B" and "C" will be removed by an excavating crew and then replaced by a concrete block wall.

We expect the project to be completed and all ranges available by Monday, August 18, but please check the web site for updates before making a trip to shoot on any of these three ranges.



The Austin Rifle Club, from space. (courtesy Google Earth)

(Continued on page 7)

The eyes of Texas are on you

Security and liability issues

BY LESLIE E. LENN

ARC CLUB SECRETARY

Recently, we have all read about the unfortunate event in Hayes County where an individual was target practicing with a .22 caliber rifle and a stray round traveled 1/3 of a mile killing a child playing in the family's back yard. There was no intent to cause harm but the responsibility and the resulting injury resulted in a felony conviction and penal incarceration for 8 years. This incident took place in a rural area and as we are all aware, especially if you are 50 years or older, the population of the US in your lifetime has almost doubled and development is rapidly encroaching on all rural property. Ranges that fire projectiles, such as rifle ranges, are extremely vulnerable to the demographic changes and this is a concern in shooting sports across the US. This concern is at the highest level by all insurance underwriters and they are responding with changes in their policy requirements.

Last year the ARC Board of Directors approved and installed a data based entry system using proximity badges which provide access to ARC property members only. During this month a 24 hour surveillance system will be installed to record both entry to the property and activities on the firing ranges.



24/7 surveillance cameras at ARC

During this month a 24

(Continued on page 3)

ARC members explain 2nd Amendment to media

BY JIM SUYDAM

ARC NEWSLETTER EDITOR

When the U.S. Supreme Court affirmed your right to keep and bear arms on June 26, members of the Austin Rifle Club were on hand to help explain the significance of the historic decision.

FOX 7 News stopped by the range to speak with ARC President Greg Troxell and Education Director Hugh Morrison. FOX 7 NEWS reporter Rudy Koski also spoke with long-time ARC member, Texas Land Commissioner Jerry Patterson. Patterson is one of the state's leading 2nd Amendment advocates and, as state Senator, wrote the law that allows concealed carry in Texas.

All three represented ARC well, and served as a needed counter-point to the shop-worn claims by D.C. Mayor that more firearms in the hands of citizens will mean more violence.

To watch the FOX NEWS 7 segment, visit:

<http://youtube.com/watch?v=t6dcO25fGG8>

Inside this issue:

ARC QUIZ	2
MEMBERSHIP REPORT	2
ARC TRADIN' POST	3
SEPTEMBER-OCTOBER CALENDAR	4-5
RANGE RULES REMINDER	6
EDITOR'S NOTE	7
PARTING SHOT	8

Austin Rifle Club

ARC membership quiz



ARC Membership Director

Ken Kornblum

- In what year was the Austin Rifle Club originally established?
A) 1894
B) 1901
C) 1918
D) 1975
- The Austin Rifle Club's property includes how many acres?
A) 15
B) 27
C) 50
D) 36
- How many current ARC members are there including Associates and Juniors?
A) 875
B) 2032
C) 1212
D) 1535
- To insure that every round stays in the range, what is ARC's rule regarding safe shooting?
A) Every shot must be properly aimed using a sight picture.
B) No instinct, hip, or fast draw shooting
C) Every shot must be parallel to the ground, through your target to the backstop.
D) All of the above.
- Before shooting on Range "F" whatsize group are you required to shoot at Range "C" 100 and 200 yard targets?
A) Just be able to hit the paper
B) 3 inches
C) 12 inches
D) 6 inches
- What is the average age of all "Full" members at ARC?
A) 29
B) 72
C) 55
D) 48



When should you use your ARC proximity card/badge at the entry gate

- Every time you enter or exit even if the gate has already been opened
- No need if you are following behind another car
- No need if the gate is locked open for a match
- Proximity card? Gate? What happened to the combo lock?

- What day is our monthly Work Day?
A) First Saturday of every month

- Second Saturday of every month
- Third Saturday of every month
- Fourth Saturday of every month



- What are the benefits of the new ARC Family Membership?

- "Main" member and Associate are both full members with ARC Voting rights
- "Main" member and Associate both get proximity card/badge and have independent access to the range
- Children in your household are included free
- All of the above

- When will annual membership renewals be done from now on?

- January through March (1st quarter)
- April through June (2nd quarter)
- July through September (3rd quarter)
- October through December (4th quarter)

Answer Key: 1) A, 2) B, 3) C, 4) D, 5) D, 6) C, 7) A, 8) A, 9) D, 10) D

NEW MEMBERS

AL LINDSEY, BILL MONTGOMERY, BRYAN BILBREY, DOUG RICE, HANS ERICKSON, JEFF NYFELER, JOE MATIACIO, MIKE BARROW, MIKE MARCADE, JANIS MARCADE, RON HUMPHREY, TERRY DAILEY, BRIAN GENTRY, EMILY GENTRY, DANIEL R KUECKER, DOYLE BROOM, RENE BROOM, GARY BILLINGSLEY, TIM EVANS



(Continued from page 1)

Our insurance underwriter has advised us they are now requiring that we have all guests sign a Waiver of Liability/Assumption of Risk Agreement. Our policy covers liability and medical injury for ARC members only and the policy costs are based upon the number of total members which a portion of your dues goes toward this protection. The insurance underwriter said the reason there is no provision in our policy to cover guests is that guests are a variable number and there is no assurance of the guest's firearm handling

skills. Under these guidelines, all guests entering ARC property must sign a Waiver of Liability/Assumption of Risk Agreement to protect both our members and our organization. To implement this requirement we have placed documents for both adults and minors in the Stat House (the small building across from the "C" range) and in the Education Building. The minors' form requires the name and signature of the minor and the name and signature of the parent or Guardian legally responsible for the minor. To assist members we have installed new signs on or in each of these

building to inform members and guests that the waiver must be signed along with the requirement that all members and guests must wear a badge to show they are authorized to be on ARC property

To be in compliance with our insurance policy and protect ARC's members and facilities, we are asking every member to make sure each person on the property is displaying a badge either as a member, guest or contractor indicating they are authorized to enter the property and there is coverage to protect ARC's

(Continued on page 6)

ARC Tradin' Post

FOR SALE: Two Hornaday-Pacific shot-shell loaders, one RCBS press, scales, loading dies, small tools and accessories, knives, many other items. Call Werner (ARC Life Member) 452-5080

FOR SALE: Marlin .22 Match Rifle; Model 2000L, green laminate stock, adjust length to fit youth/adult, match adj apt sights, rail, hand stop, is like new- bought for my daughter but she only shot it about a box. \$550 OBO. Email me for a picture, call Jim Graham at 830.228.4350 or email at graham@GVTC.com

FOR SALE: Remington 700 BDL, 7MM Rem. Mag. Wood stock, gloss finish, trigger job, barrel floated and a Burris 3X12 scope. Some small handling marks on the stock. Sub MOA shooter. Includes 80 rounds of factory ammunition.(40 Federal with Nosler Partitions and others) \$625.00 512-378-1674 work, bu-johnso@cisco.com

FOR SALE: Remington 700 BDL, 30-06 Springfield, wood stock, non-glossy

blue finish. Trigger job, glass bedded and barrel floated. Scope is 6X 18 Nikon. Good shooter. Some small handling marks on the stock. \$550.00 Call Bud Johnson, 512-258-3959 home, marinebud01@aol.com or 512-378-1674 work, bu-johnso@cisco.com

FOR SALE: 4 colt woodsman magazines for sale \$10.00 each, call Joe at 914-2599.

FOR SALE: Beretta Model 96 .40 Cal Automatic Pistol. Original owner, purchased in 2004.

Includes: Original grips and Hogue molded grips. 3 X Beretta 10 rnd magazines 4 X after market 10 rnd magazines (I've shot with all the magazines and they are flawless, no issues with double feeds, misfires, locked springs, etc EVER encountered)

Pistol is in great shape, as an ex-military officer, I've ensured it is cleaned after each range visit. I can't recall how many rounds I've fired (over 2000) and it's never misfired or misfed.

\$650.00 Letovx@gmail.com (512) 970-1507

FOR SALE: Glock Model 37, in 45 GAP. New In Box, unfired except by factory. Pistol was a sales demo model for GT Distributors that I picked up a year or so ago and have never shot. Pistol, case, cleaning kit, 3 factory mags. Pistol is the mid size Glock frame but shoots their 45 GAP round, duplicating 45 ACP performance in a smaller pistol. Standard magazine is 10 rds, so pistol is 10+1. \$465.00 ...and ...

Auto Ordnance M1 Carbine – New, current production, does not qualify for John C. Garand style matches due to new production (which I didn't realize when I bought it!). Rifle, with sling and oiler, 1 – 15 round magazine, adjustable sights. Like new, maybe 100 rds through it. \$525! I'll require a Texas Drivers License or CHL from the seller. Cash or money order. Mike at 512-331-1983

September 2008

Sun	Mon	Tue	Wed	Thu	Fri	Sat
	1	2 6:30pm Indoor Air Range practice	3	4	5	6 8 am RANGE WORK DAY
79am, range C, High Power 9 am Three-Gun Match DEMO Range A; 3 pm range orientation	8	9	10	11 6:30 pm board meeting, Marie Calendar's Gateway	12	13 8 am Jr. pistol practice
14 9am Range D/E Pistol/Cowboy silhouette match	15	16 9 am Ben Hur Provost Guard pistol practice; 6:30pm Indoor Air Range practice	17	18 7pm-General Meeting, Education Bldg	19	20 8am Women and the shooting sports, 9 am intro small-bore F-class rifle/silhouette; 11 am CHL Texas
21 9am E, 100 meter F-class 9am A, 2700 Conventional Pistol; 11 am CHL Texas class; 1pm D/E smallbore rifle	22	23 6:30pm Indoor Air Range practice	24	25 3pm CHL Texas class	26	27
28 10am C, varmint benchrest 1pm D/E blackpowder rifle match 1pm hunter benchrest match	29	30 6:30pm Indoor Air Range practice				

October 2008

Sun	Mon	Tue	Wed	Thu	Fri	Sat
			1	2	3	4
		6:30pm Indoor Air Range practice			8 am TRSA State Hunter pistol match	8 am RANGE WORK DAY
5 9am C, high power rifle match; 3 pm A, Jr. muzzle loading practice; 3 pm Range Orientation	6	7	8	9	10	11
		6:30pm Indoor Air Range practice		6:30 pm Board Meeting, Marie Calender's at Gateway		9 am Jr. Pistol practice; 10 am How to buy a handgun class
12	13	14	15	16	17	18
9 m pistol/cowboy rifle silhouette match; 9am post CHL 1 class		6:30pm Indoor Air Range practice		7pm General Meeting, Education Bldg.		9am Intro to Pistol class, 9 am small-bore "F" class and silhouette
19	20	21	22	23	24	25
9 am 100 meter "F" class match; 9 am 2700 conventional pistol match; 1 pm smallbore rifle silhouette		9 am Ben Hur Provost Guard practice 6:30pm Indoor Air Range practice		3 pm CHL Texas class	6:30 pm Hunter Ed. Part 1	8 am Hunter Ed. Part 2
26	27	28	29	30	31	
10 am 200 yard hunter benchrest; 1 pm blackpowder rifle match; 1 pm 100 yard benchrest		6:30pm Indoor Air Range practice				

Austin Rifle Club

(Continued from page 3)

investment. If a badge is not displayed, the person must either display a badge or be asked to exit the property immediately. This requirement is applicable to all members, guests, contractors and includes those involved in match events except when they are on the firing line. Match participants not on the firing line must wear a badge.

Human nature as it is, some members in the hustle and bustle activity of having guests on the property may forget to have their guests sign the waiver and pick up a guests badge. To protect ARC from this oversight, all members (including Life Members) at membership renewal will be required to sign a Waiver of Liability/Assumption of Risk Agreement to cover any guest they bring onto the property. If the member's guest does not sign a waiver, the member will have agreed to assume all risk including liability, property

damage and injury by the guest since the guest is not covered under our insurance policy. Our current policy does not provide coverage to a member assuming the responsibility for assumption of risk and liability of their guest.

These changes are necessary as development around the range is increasing and the public has demonstrated in the Hayes County verdict they are demanding extraordinary management and prudent judgment in the discharging of firearms. The insurance underwriters are reviewing their risks to insure coverage is affordable to shooting ranges and hunt clubs that are membership organizations.

Many of the changes that are taking place are not necessarily things we like, but if we accept changes, then the things we do like will be available for future generations to enjoy.

ARC rules are for everyone

BY LESLIE E. LENN
ARC CLUB SECRETARY



During the summer there was an incident at the range that the Board of Directors feel you should be informed about.

Two members of the Board of Directors made an incorrect decision to allow a shotgun to be discharged on the "B" range. Their decision should have been the "E" range which provides for the discharge of shotguns at the right end of the 40 meter backstop.

Through the watchful and

careful eyes of one of our members who recently completed the NRA Range Safety Officer class, the infraction was observed and the member was made aware of the infraction through a polite and pleasant conversation.

Due to the nature of the infraction a special session of the Board of Directors was convened to determine the severity of the rules violation.

After reviewing information from each party the Board determined the two members should have checked the range rules more carefully to insure which type of firearms may be discharged on specific ranges.

Even though there was no ex-

posure to damage property or risk of injury to anyone, the Board determined that prudent awareness



Of ARC Range Rules must be observed at all times.

The two members responsible for the infraction agreed to attend a forthcoming Range Orientation Class to refresh their knowledge of range rules.

The range rules apply to all members whether you are a New Member, a Life Member or a member of the Board of Directors.



Save the Date

Rifle sight-in days:

- August 23
- September 27
- October 25

Women and the Shooting Sports

- Sept. 20, 8am-4pm

Firearm Cleaning

- Oct. 12, 9am-3pm

Post CHL Training

- Nov. 8, 9am-3pm

To register or for more information, contact Hugh Morrison at 512-294-8321 or at education@austinrifleclub.org

DPS delays disarm Texas Concealed Handgun License holders

BY JIM SUYDAM
ARC NEWSLETTER EDITOR

Tens of thousands of Texans wishing to carry a concealed handgun are being denied the right while a backlog of applications sits idle at the Department of Public Safety HQ in Austin.

This frustrating bureaucratic SNAFU is more than a hassle for first-time CHL applicants, like myself. It may just wind up disarming even long-time CHL holders, like James Dark, executive director of the Texas State Rifle Association.

Dark's CHL expired before the DPS could manage to renew it. At one point, Dark was forced to leave his carry pistol in his car.

Luckily for Dark, though, he had obtained a Pennsylvania CLH in 2004 through the mail. Thanks to reciprocity laws, this out-of-state permit allows the holder the right to carry in Texas.

"Realizing that DPS had no chance of getting the application renewed in time, I took the precaution of paying \$26 and getting a current Pennsylvania CHL," Dark said.

"I am now carrying in Texas, on a Pennsylvania license."

Great.

This spring, I decided to get my CHL. After taking the class I took meticulous care filling out all the paperwork, getting it nota-

rized, getting fingerprinted and submitting to a mugshot. I turned it on March 7.

By law, I should have been accepted or rejected by the DPS within 60 days. Instead, it took more than 100.

The DPS claims a glut of applications — up nearly 40 percent over 2007 — are behind the delay. They say they've hired temporary workers to help move things along. They say they'll fix it.

I hope so. And I know that Dark and the Texas State Rifle Association's lobbyist Alice Tripp are working with legislators and DPS brass to make sure.

But you can give them a boost. If you have a CHL, consider it your duty. Contact your legislator, Democrat or Republican, and let them know this is important to you.

To find out who represents you in Austin and how to contact them, log on to www.fyi.legis.state.tx.us

and write your legislators. Just imagine the rush to fix things if each of the more than 258,000 CHL holders did.

To get your Pennsylvania CHL, visit: co.centre.pa.us/sheriff/license_application.asp



Suydam firing his CZ SP-01 during his CHL range test.

(Continued from page 1)

Until the project is entirely completed Ranges "B", "C" and "F" will be closed for safety reasons. Please do not even consider shooting on any of these ranges until the project is complete and the 'CLOSED' signs are removed from the 'Range Availability' sign at our entry gate. Look here for updated status during the project as well as a notification when all ranges are available again.

All other ranges will be available

according to their normal schedules and the standard range rules remain in effect for these ranges. There will be a construction crew on site, so please be very careful while driving in to any of the open ranges.

When the project is completed we will have reclaimed a huge amount of dirt to be used elsewhere on the range, and replaced it with a sturdier barrier which will not continuously erode as our earth berms do. An added bonus is that the block walls have a footprint about

10 feet wide versus as much as 30 feet for the earth berms. This will yield us greater safety plus additional shooting positions.

If you have any questions please feel free to contact anyone on the Board of Director's contact list. We do ask that you bear with us during the construction period. When this project is complete it will be a great benefit for all of our members.



Shootin' straight since 1894

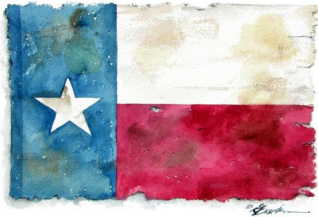
AUSTIN RIFLE CLUB

16312 Littig Road
Austin, TX 78714-1399

RETURN SERVICE REQUESTED

E-mail:

newsletter@austinrifleclub.org



The Austin Rifle Club, Inc. is an organization of about 1,200 Central Texans who enjoy shooting sports, competition, and are devoted to safety and education. The Club traces its roots to a club chartered in 1894. The Club is a private, not-for-profit organization associated with the National Rifle Association, the Texas State Rifle Association, and the Civilian Marksmanship Program. The Club has an active NRA Junior Division. Range facilities are on Littig Road, between Manor and Elgin. The range is situated on a Club-owned 27 acre tract developed for several different shooting disciplines. The Austin Rifle Club has seven shooting ranges, from seven to 300 yards.



This picture, taken at the range on Armed Forces Day, is the most-viewed photo on the new-and-improved AustinRifleClub.org, where ARC members can get range updates 24/7.

The general membership meeting is at the ARC Educational Building, at 7 p.m. on the Third Thursday of each month.

All ARC members are encouraged to attend. It's a great way to get involved in club activities and get to know other club members.